

# Magnetic microbeads Cell Separation Products



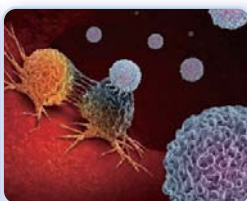
RWD cell separation products include self-developed magnetic microbeads cell separation kits and cell separation columns, which can obtain target cells with high purity and high viability through simple operation.

Nano-sized magnetic beads do not need elution, and the separated cells can be directly used in downstream experiments such as flow cytometry, cell culture, single cell sequencing and so on.

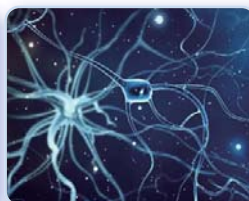
## Application field



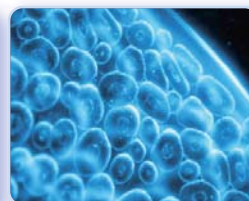
Immunology research



Oncology research



Neuroscience



Stem cell research



Cell therapy

## Work flow



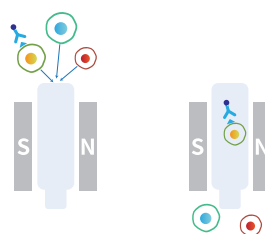
### Antibody incubation

Incubate the antibody with cell suspension at 4 °C for 10-15min



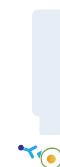
### Microbeads incubation

Incubate the magnetic microbeads with cell suspension at 4 °C for 10-15min



### Magnetic separation

Put the separation column into the magnetic field, add cell suspension into the column. Only cells labeled with magnetic beads be captured in the column



### Elution

Remove the column from the magnetic field and add buffer to elute the positive cells

## Product features



High purity,  
high viability and high  
recovery rate



Obtained cells are  
compatible with  
downstream applications

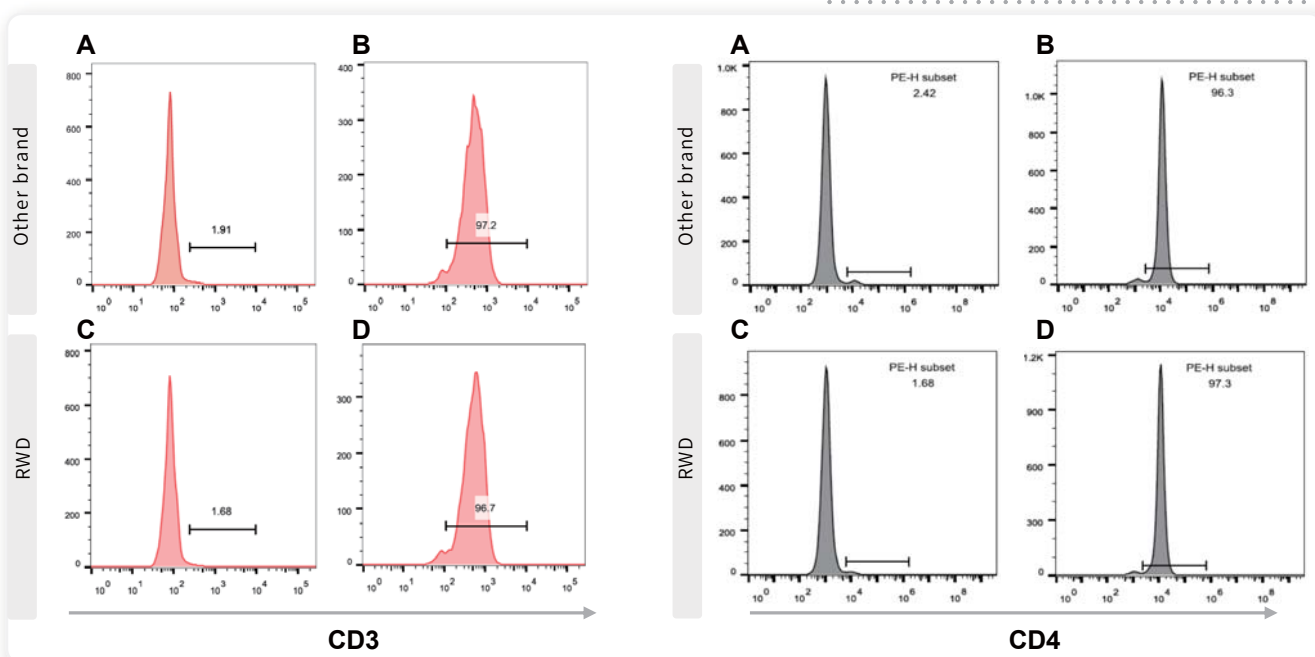


Mild, non-toxic,  
biodegradable

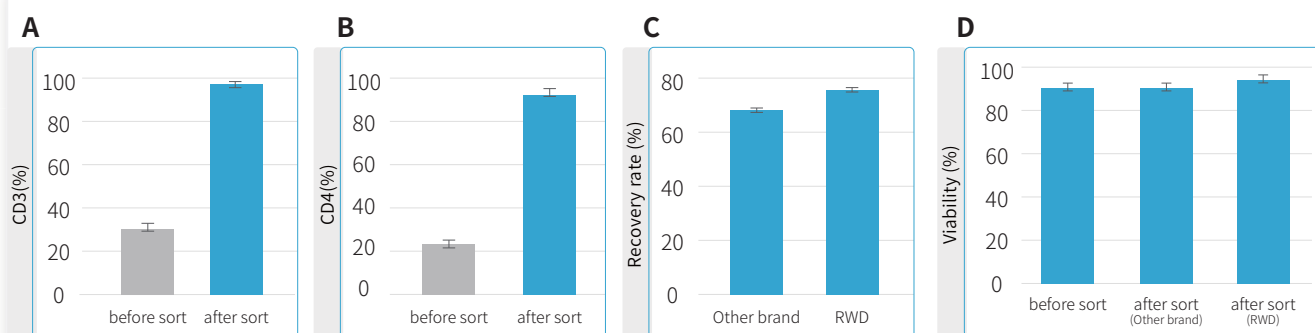


Efficient and  
convenient

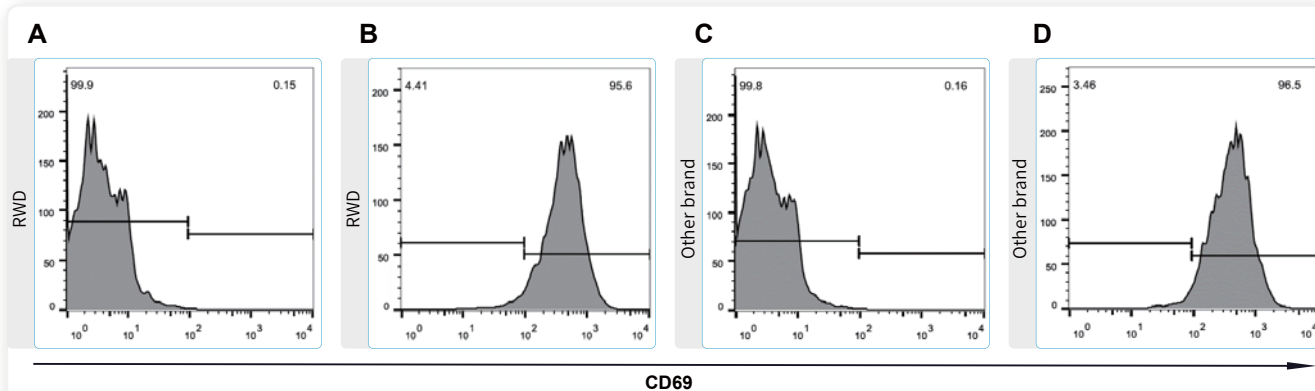
## Results display



purity of mouse spleen cell samples after CD3 and CD4 separating: A. and C. negative tube (outflow component of column) , B. and D. positive tube (captured component of Column)



A. and B. purity of mouse spleen cell samples before and after CD3 and CD4 separating, C. and D. recovery rate and viability of mouse spleen cell samples after CD3 separating



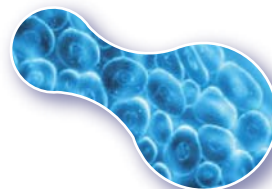
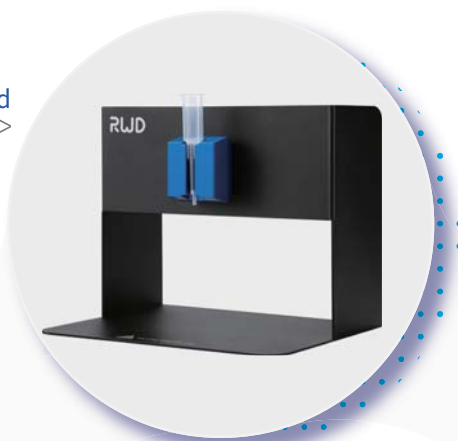
CD69 detection of mouse spleen cell samples after CD3 separating: A. and C. day0 after sorting, B. and D. day3 activated by CD3/CD28 monoclonal antibody

## Ordering Information

Cat NO.	Product name	Size	Capacity
K1301-10	Mouse CD3+ Cell Separation Kit	1ml*2	for 1*10 <sup>9</sup> total cells
K1302-10	Mouse CD4+ Cell Separation Kit	1ml*2	for 1*10 <sup>9</sup> total cells
K1303-10	Mouse CD8+ Cell Separation Kit	1ml*2	for 1*10 <sup>9</sup> total cells
K1201-10	Human CD3+ Cell Separation Kit	1ml*2	for 1*10 <sup>9</sup> total cells
K1202-10	Human CD4+ Cell Separation Kit	1ml*2	for 1*10 <sup>9</sup> total cells
K1203-10	Human CD8+ Cell Separation Kit	1ml*2	for 1*10 <sup>9</sup> total cells
HCSC-25	LarSep Columns (25pcs/box)	25pcs/box	/
HCSC-10	LarSep Columns (10pcs/box)	10pcs/box	/
LSC-S1	LSC Separator (single channel)	1pcs	/
SS01	Separation stand	1pcs	/
CSAK-01	Cell Separation assembly kit (single channel)	1set	Including LarSep Columns (25pcs), LSC Separator (single channel) 1pcs, Separation stand 1pcs

LSC Separator and stand

>>>>

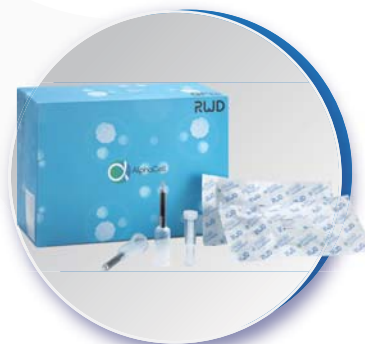


Cell Separation Kit

<<<<

LarSep Columns

>>>>



### RWD Life Science Co.,Ltd

Add: 19-20/F, Building 7A, Shenzhen International Innovation Valley, Dashi 1<sup>st</sup> Road, Nanshan District, Shenzhen, Guangdong, P.R. China    E-mail: [rwd@rwdstco.com](mailto:rwd@rwdstco.com)

### RWD Life Science Inc.

Tel: (858)900-5879    Support: [service@rwdls.com](mailto:service@rwdls.com)    Web: [www.rwdstco.com](http://www.rwdstco.com)